



INSIDE
Architecture Architect & Interior Designer

www.insidearchitecturemagazine.com Year - 2021
 Price - 500/-

“Our opportunity, as creator, is to learn how to handle the complexity, rather than shy away from it, and to realize that the big art of design is to make complicated things simple.”
 - Tim Parsey



Ar. Sudiksha Parekh

Imprints Architects:

It is a company set up by an architect who has realised the need to bridging the gap between common man's aspirations to creativity and the gap between contractors and clients.

It has a team of experienced architects and is led by Ar. Sachin Suddala with expertise in various zones of planning , approval, graphics and construct with a team of consultants and labours who are more than 10 years old to the firm.

The founder of the company, Sudiksha Parekh is an architect graduated with a gold medal from CEPT Ahmedabad. She has done her design course in interior design from CEPT Ahmedabad. She had been offered a scholarship on merit and studied at 'school of architecture, Burgdorf, Switzerland. She believes, "The journey of creation is equally important as the final design."

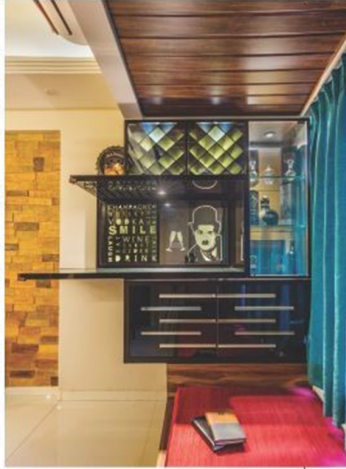
We believe in an organic growth of a design and no information for us is silly and every raw idea is heard seriously. Design is a unique creation which starts with a concept or a story which is derived from our clients brief and the abstract ideas are transformed to a spatial experience.

The Colourful Wood House:

It is designed for Raj and Divi Hegde, a family with three generations who were born, raised, and lived in different locales. It was tough to come up with a theme until we designed the entire house using their photographs of their lives, and the concept eventually developed as a blend of India's southernmost culture with the flair and hustle of Mumbai. Because the house was filled with people from various generations, each person's thoughts were distinctive in their own right. The old parents wanted the house to have a traditional aspect, but the middle generation preferred a rustic look with modern elements. Though both approaches had one thing in common: the use of wood. Wood used in the

traditional houses of south and the wood found in the rustic looking pubs and classic British backdrop of Mumbai culture. While we used wood to create modern as well as traditional rich ambiance, we brought together the columns as well as the elements of stone, metal, fabrics and photographs of both the places through wall papers, artificial stone, texture, ceramics, laminated laser cuts and real wood to complete the pictures of our imagined ideas creating the expressive images that talked about the individuals of this family.

The old parents room has black and gold completed with its combination to the plain while giving beauty to the modest white. A collage of photographs of kathakali, colourful images of elephants, and the traditional temple in which the family has profound trust is produced to add to the colours and powerful accents of the richness of the south of India. The young couple's room has a rich wood finish, a fine old wood ceiling, and fashionable lights that mimic the British backdrop of typical Mumbai settings with an antique aspect. To enhance the vintage aesthetic, the room includes raw texture highlights with an antique gold metallic vibe. Mumbai is also renowned as the 'City of Bollywood - Bombay Cinema,' hence the wallpaper in the bedroom is from a famous Bollywood film from the black and white era, evoking a sense of nostalgia.



The black bathroom is also a striking manifestation of its copper highlight, which adds to the vintage aesthetic. The living area is a clear and uncomplicated portrayal of a South Indian settled family who has made Mumbai their home. The love of wood, as seen in nostalgic photos of south Indian homes and designer touches, transforms into a rustic glimpse of Mumbai life. A bar with low seating to enjoy the informal leisure of drinking, and wooden panels with vintage step border ceiling that adds to the commotion of a party or can multi-functionally create a subtle mood for a traditional South Indian gathering rendered with a water fountain and green corner to connect the outs.

